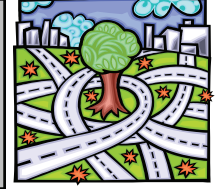


Directions



Although the address is 25 Arlington Street, the entrance to the school can be mapquested (www.mapquest.com) as 321 Market Street. We are on St. Columbkille's property; St. Columbkille's is a large light-colored brick church at the corner of Market and Arlington Street, where Arlington Street becomes Sparhawk Street. The CLCS entrance is at the rear of the school building.

When parking for CLCS, please park against the fence.

From Commonwealth/BU area

Commonwealth Ave to Brighton Ave, left on to Market Street. Look for the large yellow brick church on your right. The parking lot will be on your right, just before the church.

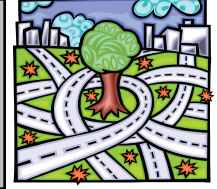
From the Turnpike (Outbound from Downtown Boston)

Take Allston/Cambridge Exit. Follow signs to Allston/Brighton. The exit ramp will put you on Cambridge Street. Stay on Cambridge Street for about a mile and a half, at which point Cambridge Street will turn into Washington Street (St. Elizabeth's Hospital will be on your left and the Brighton Police station will be on your right). Drive about a quarter mile to the traffic light in Brighton Center. Chestnut Hill Avenue is on your left and Market Street is on your right. Turn right on Market Street. Arlington Street is the first traffic light on Market Street, but you want to drive through the light. The entrance to the school will be on your left just after the large stone church (St. Columbkille Catholic Church). Turn into the parking lot and drive to the back fence. The school is on your left.

From the Turnpike (Inbound from Western Suburbs)

Take Exit 17, Newton/Watertown. At the end of the ramp, go straight. At second traffic light, turn right onto Park Street. Go one block. At light, turn left onto Tremont Street. Go one mile to Oak Square. Notice the YMCA straight ahead. Turn left in front of the YMCA, then immediately right onto Faneuil Street. Go 0.5 miles to fork in the road, keeping right of Kiki's Convenience Store. You are now on Arlington Street. Go 0.4 miles to second light. Notice the large church on your left. This is Market Street: turn left. Turn left immediately into the large parking lot, past the church, and drive to the other side of the lot and park along the fence.

Directions, continued



From the Jamaica Way

Get off on Rte 9 East. Bear right onto Harvard Street in Brookline Village. Very shortly, bear left onto Washington Street. Drive through Brookline, cross Beacon Street and Commonwealth Avenue. In Brighton Center, turn left to stay on Washington Street. After a few short blocks, turn right on Market Street. The entrance to the school will be on your left just after the intersection with Arlington Street. Turn into the parking lot and drive to the back of the parking lot. The school is on your left.

Via Public Transportation

By Bus

The 86 bus stops directly across the street from St. Columbkille Church at the corner of Market Street and Arlington Street or Market Street and Sparhawk Street. Disembark from the bus and cross Market Street, walking away from Brighton Center and down Market Street. This is a busy intersection, so please be careful. Walk past the church and turn left into the large parking lot. The CLCS entrance is at the far end of the parking lot on the left.

By "T"

Take the B Line/Boston College Green Line train from Park Street Station. Disembark at the Warren Street exit. A small row of stores is in front of you. Turning right at the corner, walk up Warren Street. You will walk past several medical facilities and Brighton High School. Pass through the very large intersection. Warren will become Sparhawk Street. Walk down Sparhawk Street until you reach the corner of Market Street and Arlington Street. Cross the street and turn right. Walk past the church and turn left into the large parking lot. The CLCS entrance is at the far end of the parking lot on the left.

